

NAIROBI

elements

LUXURY LIVING

BY SNS DEVELOPERS



DISCOVER LUXURY LIVING IN NAIROBI

These modern and spacious villas boast a privileged location in Grevillea Grove, renowned as one of the city's premier residential area.

Elements is situated in a tranquil environment where high rise buildings are not permitted, and its close proximity to coveted international schools, hospitals, shopping centers, and many of the Nairobi's best restaurants make it convenient.

ELEMENTS

**SPACIOUS MODERN VILLAS WITH
LARGE GARDENS IN THE ESTEEMED
GREVILLEA GROVE NEIGHBORHOOD**



ABOUT US

With more than 35 years of experience, in design and construction, SNS Developers was created as a company that focuses on exceeding expectations through creating versatile homes designed for every lifestyle.

With this project we seek to introduce a new level of luxury homes to Nairobi.

OUR DESIGN PRIORITIES



Nature Inspired Homes

Open-concept spaces inspired by nature that flow freely in colors, patterns, and textures influenced by our natural elements



Family-Centric Design

Each aspect of our design involves detailed planning and a touch of love to ensure your family's prosperity grows happily



Versatility & Customizations

Our spaces are designed with versatility to accommodate your design input to create your the perfect home for you

ELEMENTS



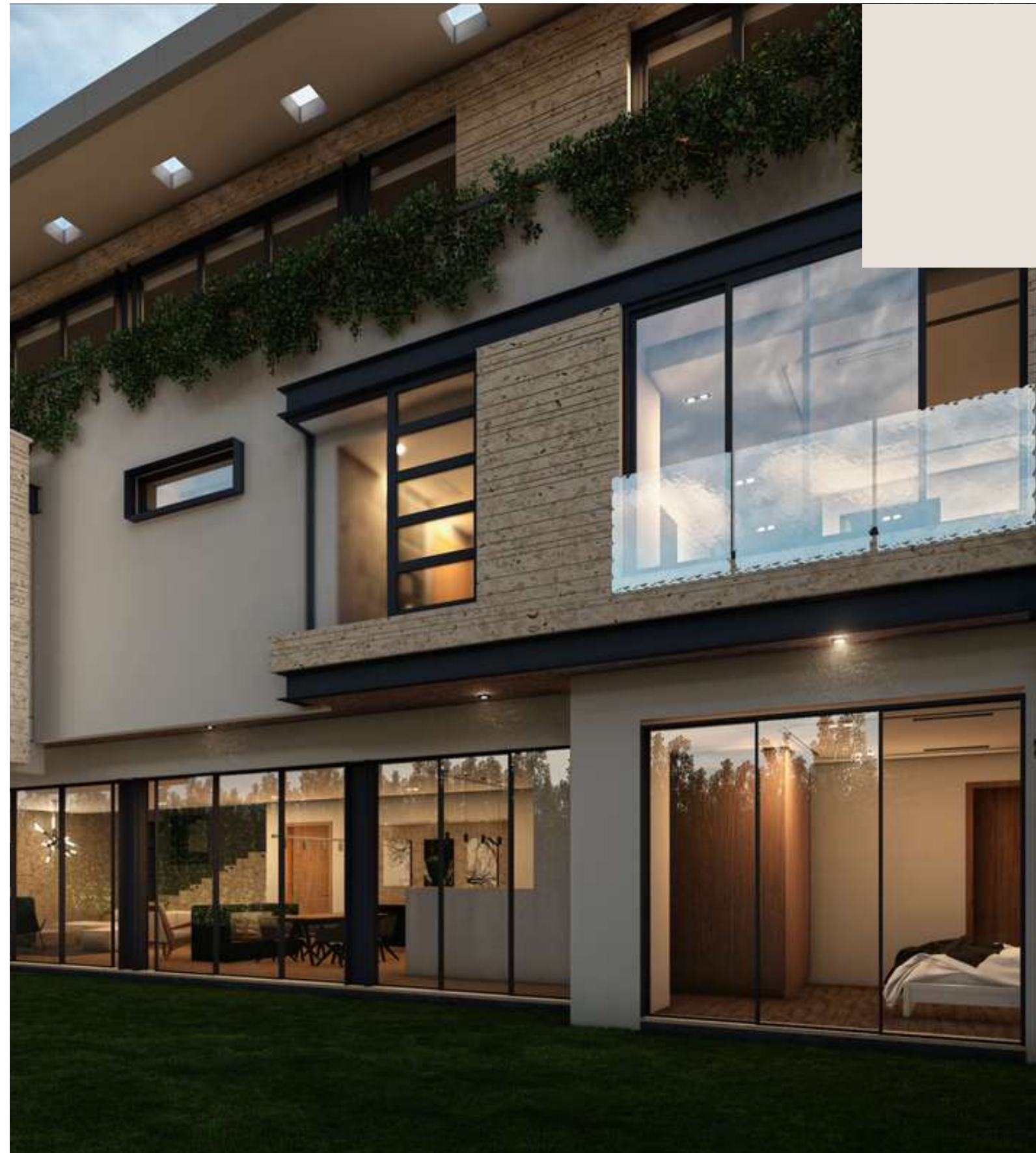
CONCEPT BOARD



To design homes that are exciting to walk into, efficient in their use of space, comforting for those living in them, and sustainable in all aspects.



LUXURY LIVING



ELEVATING DESIGN

Elements is designed as a true masterpiece, inspired by Vibrant Mediterranean Architecture that combines subdued natural tones with a sense of flair to become a home that is Stylish & Satisfying.

Each villa has been conceived to make the most of their large gardens, with every single space of the house feeling grand and yet familiar. Large windows allow an abundance of natural light into all parts of the house, and are designed to maximize ventilation.

The elevations use a combination of complementary coral and gray natural stone to make your home feel modern and timeless.

MAIN GATE & GUARD HOUSE



ELEMENTS

FRONT ELEVATION



12

ELEMENTS

GARDEN ELEVATION WITH LARGE
WINDOWS ALLOWING NATURAL
LIGHT AND VENTILATION



ELEMENTS

GARDEN ELEVATION WITH
NATURAL CORAL STONE &
GREY WOVEN BRICK DETAIL



ELEMENTS



THE LIVING SPACES

Every detail of this home has been carefully selected, allowing residents to enhance their interiors with the tropical beauty that surrounds each home, creating a sublime compilation that characterizes the impeccable design at Elements.

FEATURES:

-  European Designer Kitchen
 -  Floor to Ceiling Windows
 -  Three Car Garage
 -  Solar Water Heater
 -  Motion & Vibration Sensors
 -  Guaged Porcelain Tiles
-  Customized Walk-in Closets
 -  5 Large En-Suite Bedrooms
 -  Energy-Efficient Fireplaces
 -  French Wooden Flooring
 -  Huge Gardens
 -  Common Generator & Borehole

MAIN DOOR ENTRANCE
& PATIO WITH NATURAL
LUNAWOOD CEILING



ELEMENTS

THE LIVING ROOM

A stunning space with a floating fireplace, wooden parquet floors, and floor-to-ceiling windows that connect the interior with lush gardens. Materials such as wood, stone, and marble blends Japanese Zen style with Mediterranean natural elements, creating a cozy atmosphere.



ELEMENTS

**LIVING ROOM, ATRIUM GARDEN,
MARBLE STAIRCASE & FIREPLACE**



ELEMENTS

THE KITCHEN

The modern kitchen, adjacent to the dining area, is equipped with state of the art appliances, plenty of storage space and a kitchen island that is perfect for daily family use and for hosting friends.



**FAMILY ROOM WITH A NEUTRAL
COLOR PALETTE & WARM MATERIALS
TO CREATE A COZY ATMOSPHERE**



ELEMENTS

SPACIOUS EN-SUITE BEDROOMS
WITH WALK-IN CLOSETS &
NATURAL WOOD PANELLING



ELEMENTS

ALL BEDROOMS HAVE LARGE
PREMIUM QUALITY SLIDING WINDOWS
FITTED WITH MOSQUITO NETS



ELEMENTS

BATHROOMS

All bathrooms have floor-to-ceiling high gauge porcelain tiles & concealed silent extractor fans to avoid moisture & odor build up. They come equipped with premium European sanitary ware, sleek vanity units, & skylights for natural light.



BATHROOM WITH PREMIUM
EUROPEAN SANITARY WARE,
SLEEK VANITY UNITS, & SKYLIGHTS



ELEMENTS

**THE SOPHISTICATED MASTER SUITE
HAS LUNAWOOD PANELLING, FLOOR
TO CEILING WINDOWS AND FEATURES
AN ELEGANT DRESSING ROOM**



ELEMENTS

**THE 420 SQUARE FOOT MASTER SUITE
CAN BE CUSTOMIZED TO INCLUDE A
PRIVATE LOUNGE OR WORK SPACE, AND
OPENS TO YOUR PERSONAL SUN DECK**



ELEMENTS

MASTER BATHROOM WITH A
DESIGNER BATH TUB, "HIS &
HER" WASH BASINS, AND
PLENTI OF VANITY STORAGE



ELEMENTS

MASTER BATHROOM WITH A HIGH
PRESSURE RAIN SHOWER & NICHE
FOR ALL YOUR TOILETRIES



ELEMENTS

AN ELEGANT STAIRCASE AND THREE-LEVEL
OPEN ATRIUM CONNECTING ALL LEVELS OF
THE VILLA



ELEMENTS

**SKY LIGHTS IN THE CEILING, PERFORATED
BRICK DETAILING & LARGE WINDOWS
ENSURE THE WHOLE ATRIUM GETS PLENTY
OF BREEZE AND NATURAL LIGHT**





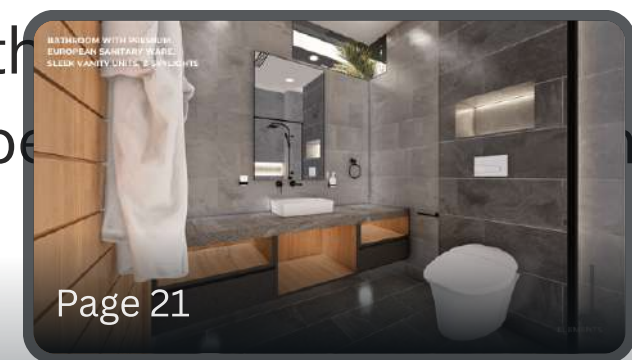
FLOOR PLANS

Elements offers four different floor plans ranging from 6,300 to 8,800 square feet of personal space.

Each Luxury Villa is spread over 3 floors and consists of 5 spacious bedrooms, 5.5 bathrooms, 1 large living room, 2 Kitchens, a family room, a 3 car garage, DSQs, and an indoor entertainment area that can host over 50 of your guests.

Designs and provisions have also been made for a summer kitchen, an elevator, air-conditioning, home automation and RO system.

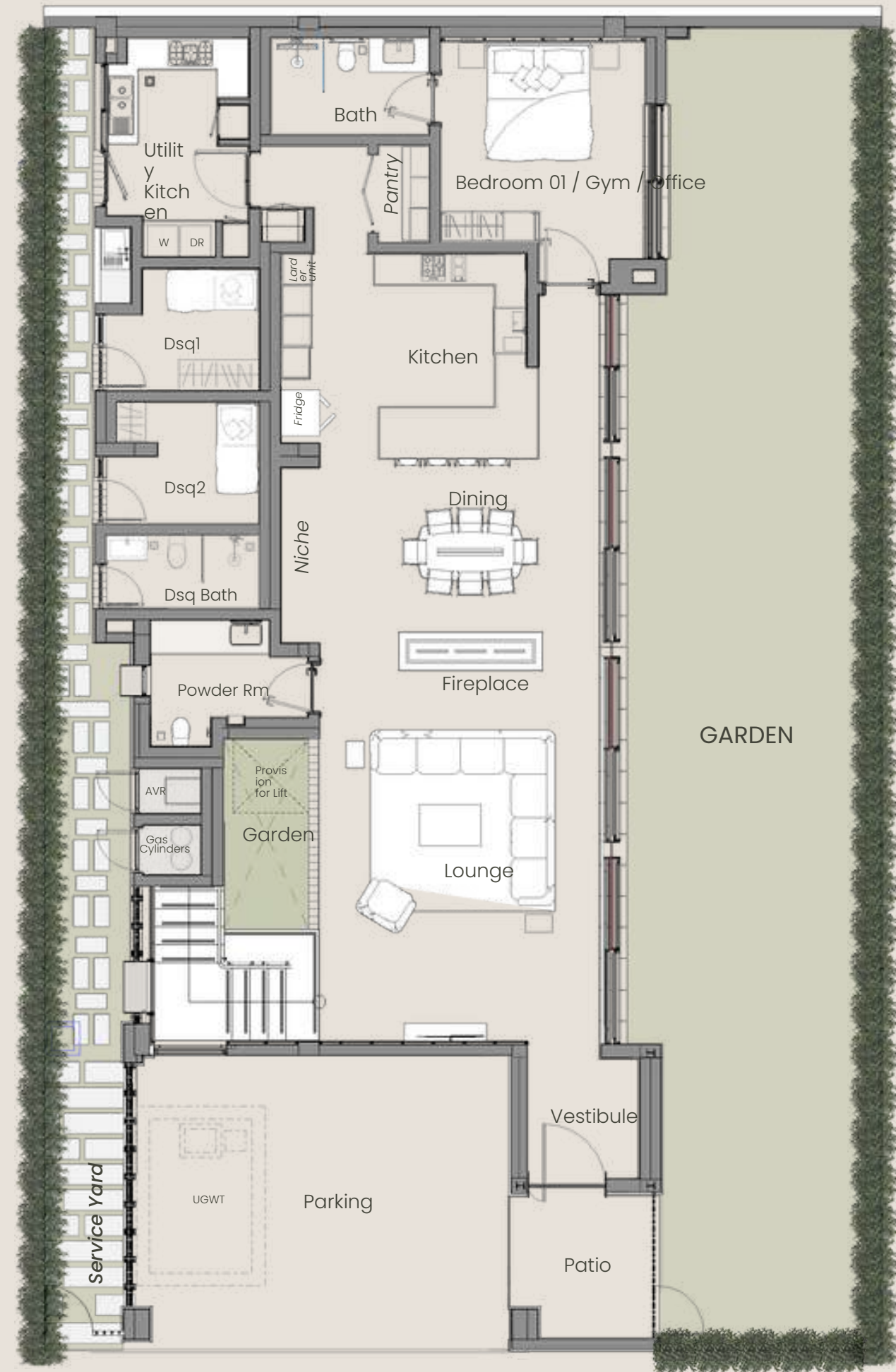
While the theme of all floor plans are similar, each of the four types is designed keeping a specific home owner in mind.



Page 21

TYPE A - 3 FLOORS

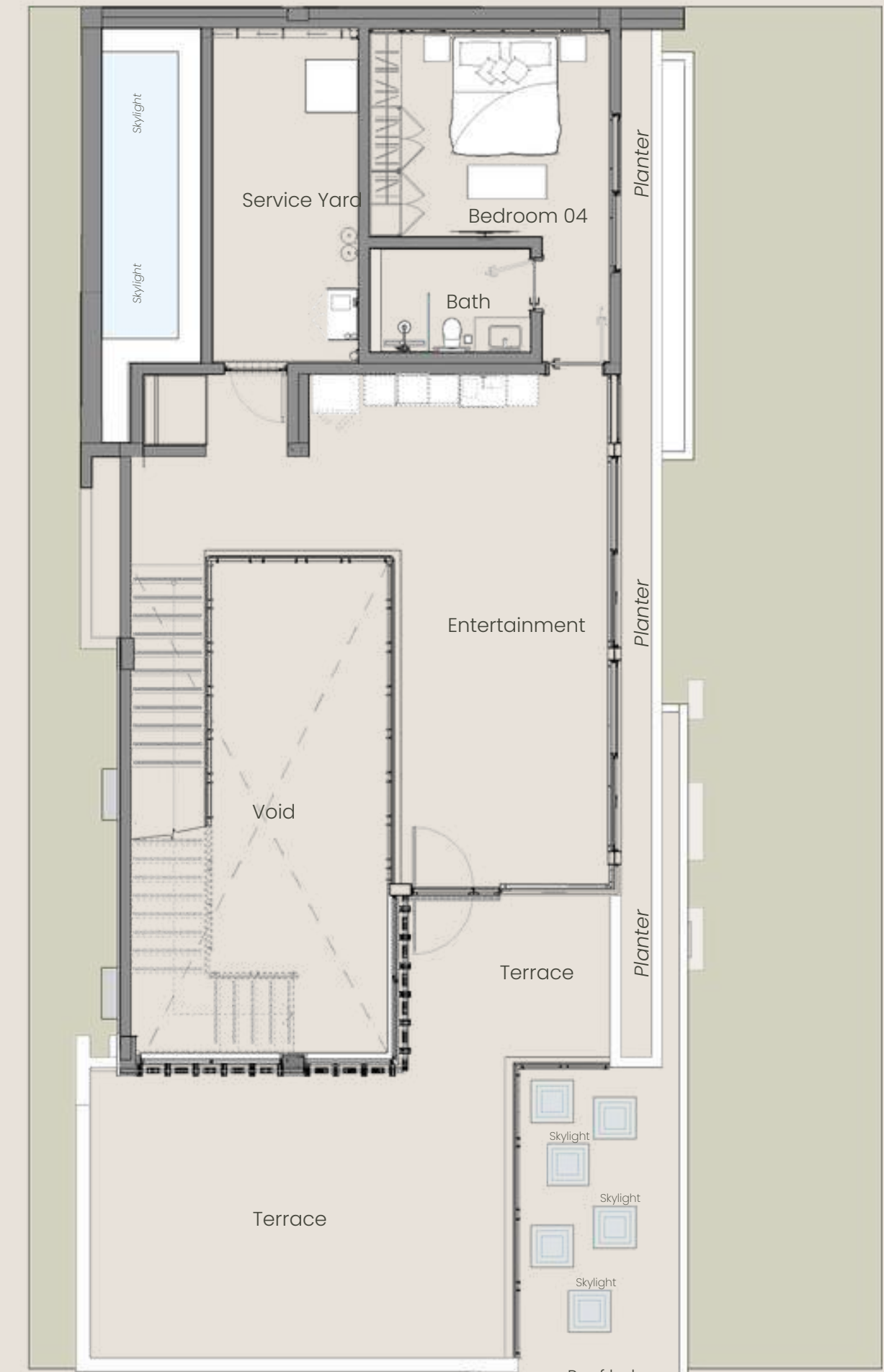
7,194 SQ FT



GROUND FLOOR



FIRST FLOOR



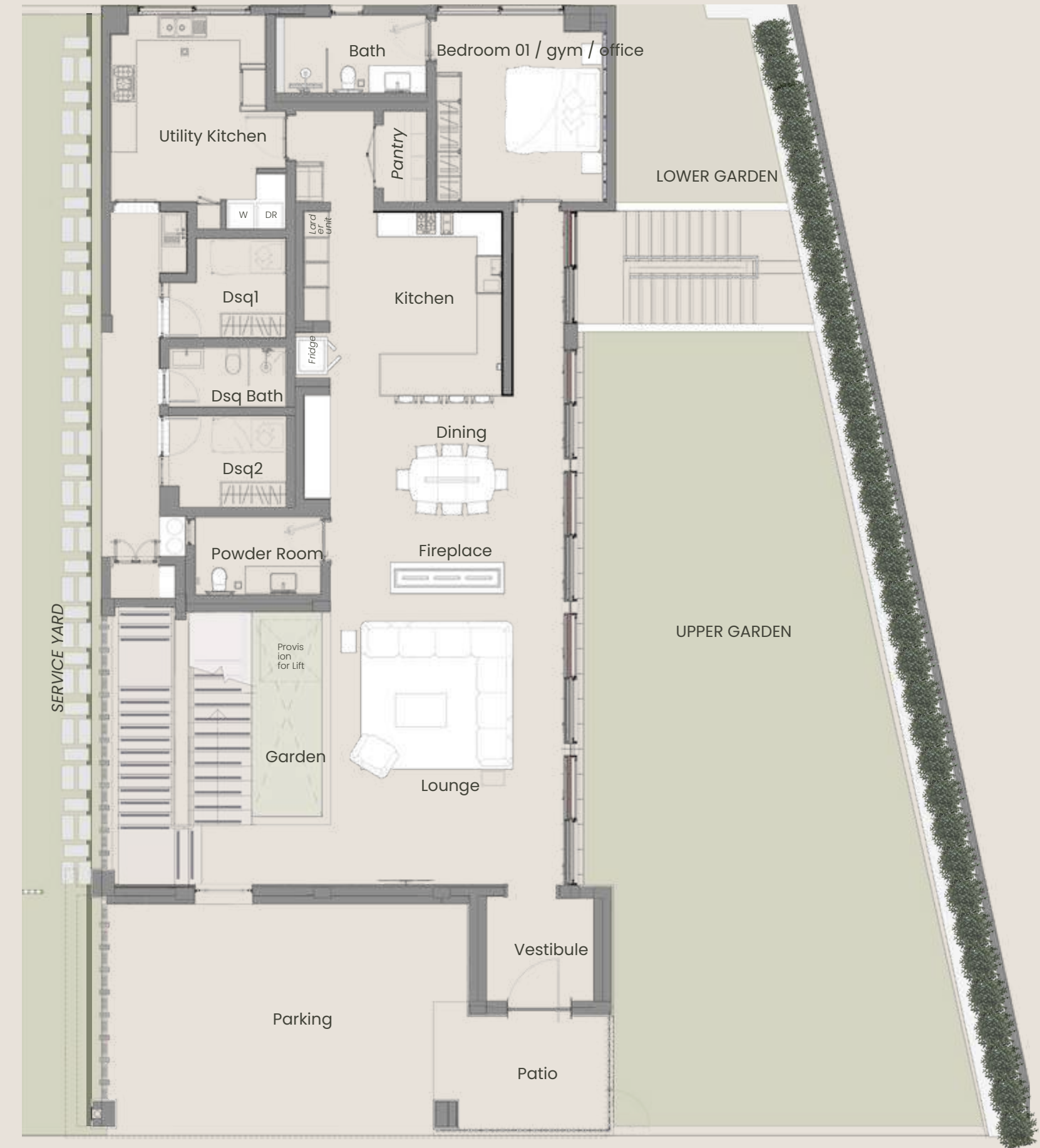
SECOND FLOOR

TYPE B - 4 FLOORS

8,801 SQ FT



LOWER GROUND FLOOR



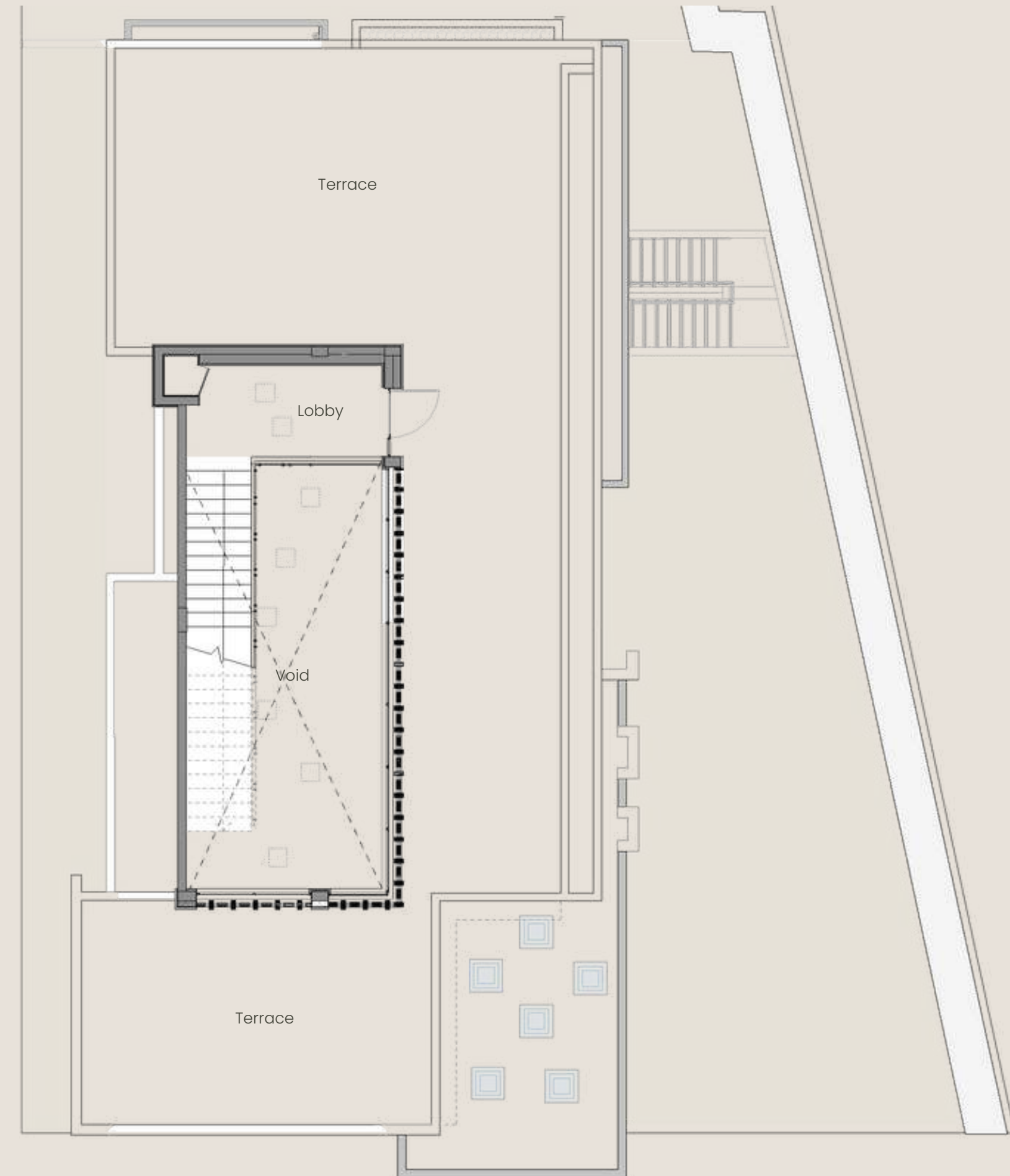
UPPER GROUND FLOOR

TYPE B - 4 FLOORS

8,801 SQ FT



FIRST FLOOR



SECOND FLOOR

TYPE C - 3 FLOORS

6,305 SQ FT



GROUND FLOOR



FIRST FLOOR



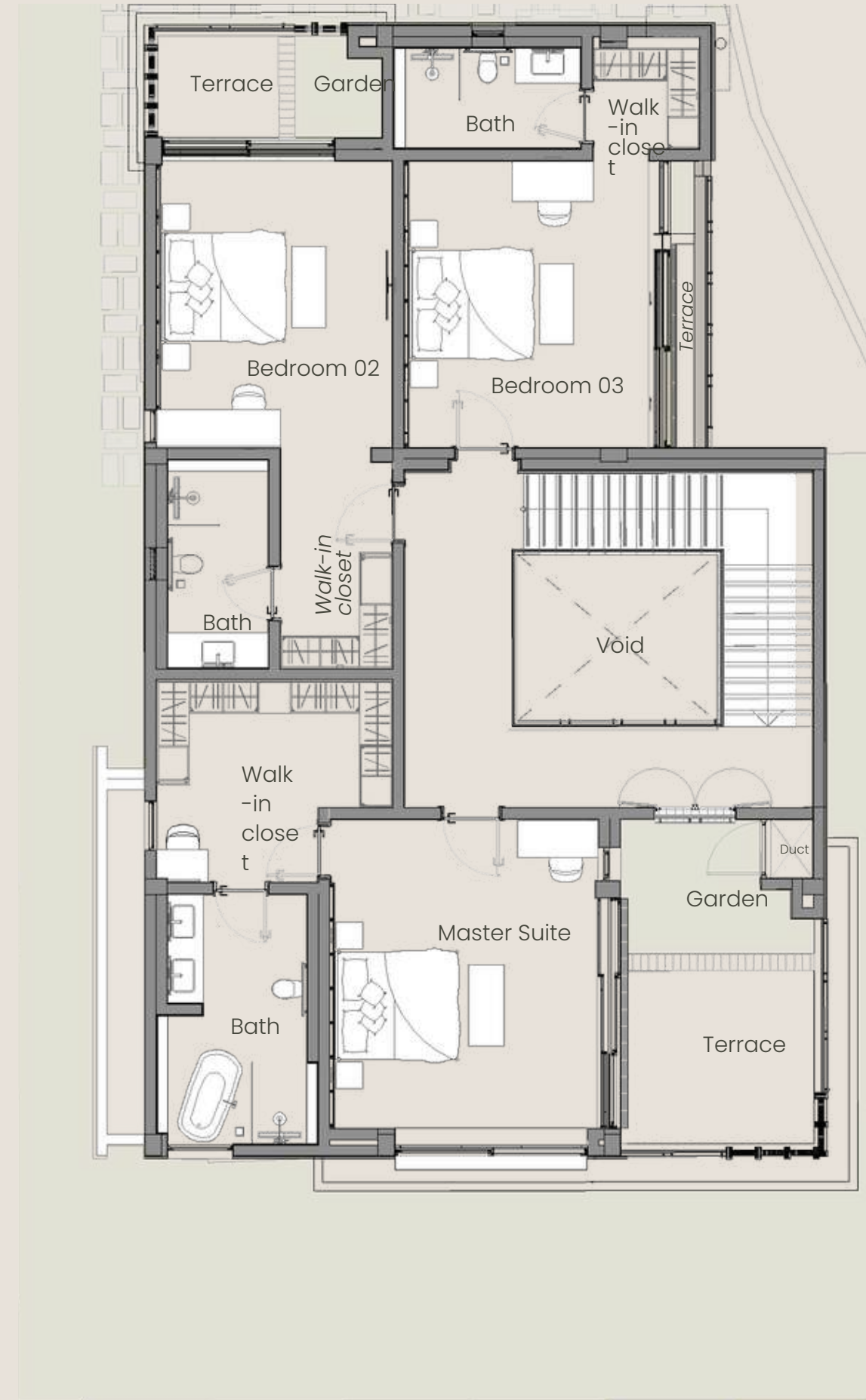
SECOND FLOOR

TYPE D - 3 FLOORS

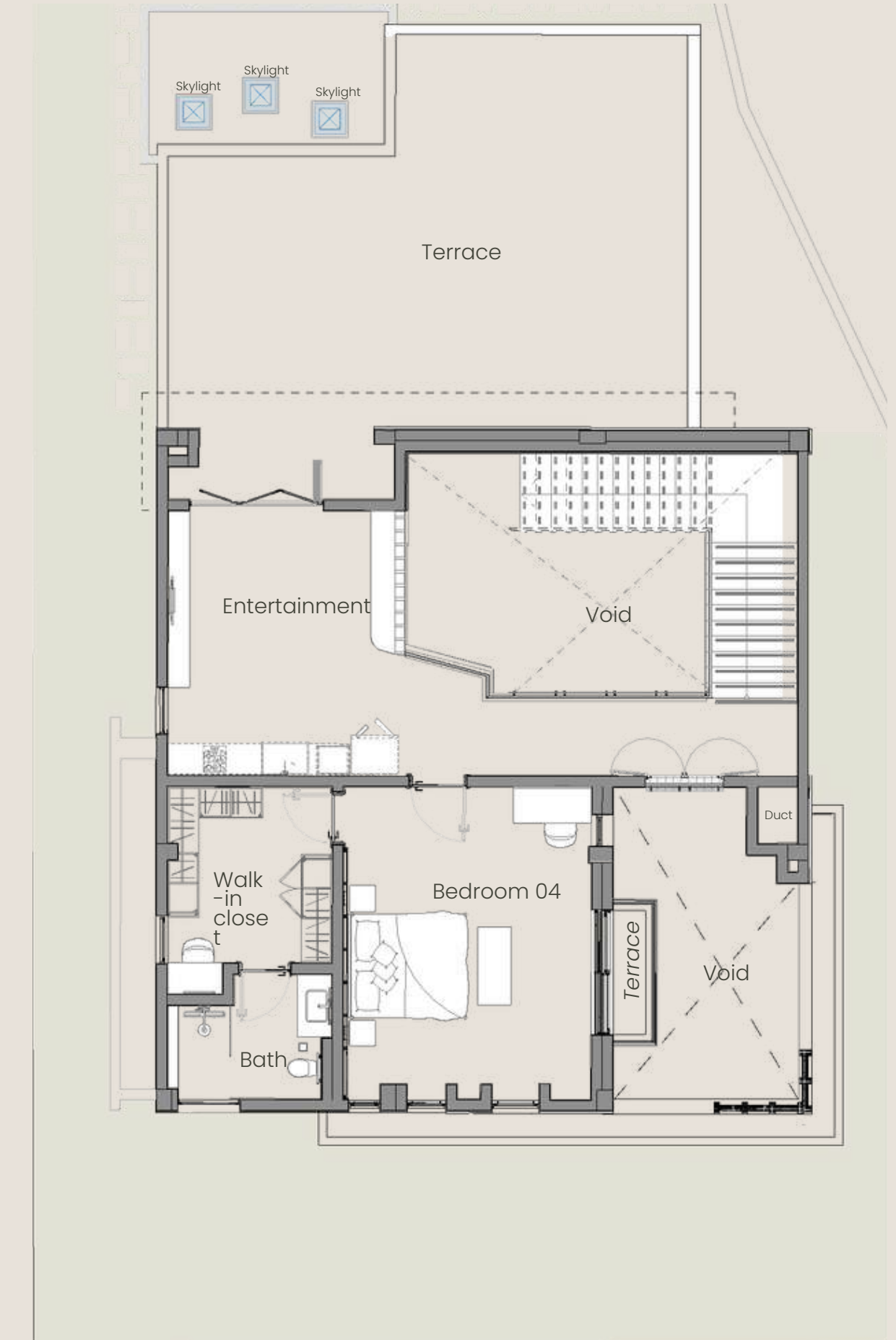
6,634 SQ FT



GROUND FLOOR



FIRST FLOOR



SECOND FLOOR

CONTACT US

Dunhill
CONSULTING LIMITED
Professional • Cost Effective • Hassle Free

15 Hevea Court, Eldama Ravine Rd, Westlands.
Tel: +254 786 386 445 | +254 735 267 825 | +254 720 911 136
sales@dunhillconsulting.com | www.dunhillconsulting.com

DISCLAIMER

Dunhill Consulting Ltd hereby give notice that -

No description or information given whether or not in these particulars and whether written or verbal about the property or its condition or its value may be relied upon as a statement or representation of act.

Neither Dunhill Consulting nor any joint agents have any authority to make any representations and accordingly any information given is entirely without responsibility on the part of the sellers(s) or lesser(s).

These particulars do not constitute, nor constitute part of, an offer or contract, nor shall they merge in any offer or contract which may be made between the sellers or lessors and the recipient of the information.

The computer-generated images show only certain parts of the property at the time they were taken.

Any areas, measurements or distances given are approximate only.

Any reference to alternations to, or use of any part of the property is not a statement that any necessary planning, building regulations or other consent has been obtained.

These matters must be verified by an intending buyer or lessee.

Any buyer or lessee must satisfy himself by inspection or otherwise as to the correctness of any information given.

